

City and County of Swansea



Child and Family Services Scrutiny 2017



Swansea's Vision

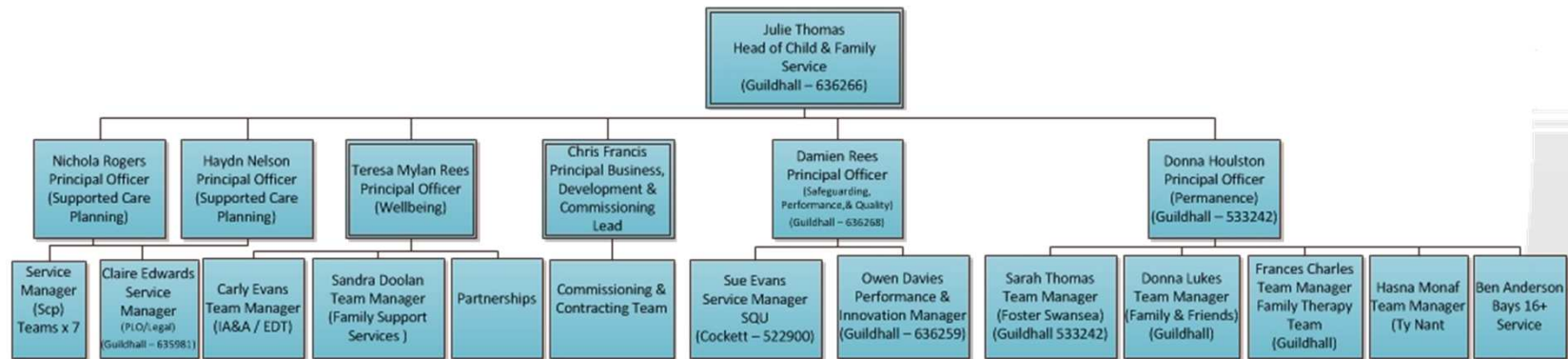
- ▶ Clearly and consistently communicated and owned by all staff within the organisation.
- ▶ Vulnerable children are safeguarded, live within permanent, stable, secure and loving families which provide opportunities for success and enable them to grow and develop into healthy, well rounded adults.



What we look like

Child & Family Services Management Structure

2017



What's worked well

- ▶ CSSIW inspections
- ▶ Ty Nant
- ▶ Foster Swansea
- ▶ Family and Friends Team
- ▶ Flexi home support
- ▶ Implemented the Act
- ▶ Keeping children local and in families



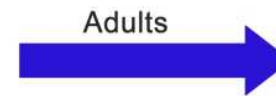
Wellbeing

What matters to the child?



Physical, intellectual, emotional, social and behavioural development

“Welfare” as that word is interpreted for the purposes of the Children Act 1989



Control over day to day life

Participation in work



What we are all about in Swansea

- ▶ Children's Services is about achieving safety and good wellbeing outcomes for children.
- ▶ Achieving permanence
- ▶ Its about keeping children and families at the centre of what we do.
- ▶ Listening to and valuing their experience.
- ▶ Having humility, hope and vision.
- ▶ Valuing and listening to staff.
- ▶ Understanding that achieving safety, wellbeing and permanence and running a cost effective efficient service are not mutually exclusive.
- ▶ Recognising we can't do it alone – our partners are crucial to making this happen.



Child & Family Services 3 strategic priorities

- ▶ Safe LAC reduction strategy
- ▶ Financial sustainability
- ▶ SOS – Signs of Safety/SCP redesign

With financial sustainability and the safe LAC reduction strategy predicated on the success of our practice framework – SOS



Safe LAC reduction strategy– what’s worked well

- ▶ One of the few LA’s in Wales whose LAC population is reducing safely and steadily – 599 to 465 Jan 2017
- ▶ Reducing entry to LAC
- ▶ Reducing time LAC are accommodated.
- ▶ Ensuring more children and young people leave care.
- ▶ Improve outcomes and reduce costs of LAC placements.



Social Services PNFM / People DMT /
Family Support Continuum Steering
Group

C&F POG
Programme Sponsor – Julie Thomas

Child & Family Improvement Program

INTERNAL PRIORITIES	Performance + Quality Management / Assurance	Partnership + Workforce Development	Permanence	Supported Care Planning	Commissioning, Policy and Partnerships	CROSS CUTTING THEMES
<p>Ensure Compliance - SS&W Act</p> <p>Safe LAC Reduction Strategy and Corporate Parenting Strategy</p> <p>Family Support Commissioning Review Implementation</p> <p>Signs of Safety</p> <p>Reviewing Performance Information</p>	<p>IRO Roles and Procedures -IRO and SCP and 16+ links -IRO and Fostering and FAF's links -Quality of IRO panels -Process to outline IRO role in care planning for court -Review of IRO QA monitoring</p> <p>IRO Role with Child Protection -Developing SOS methodology and consistency -Overarching SOS implementation framework -CSE review</p> <p>Improving Outcomes -How do we measure improvement -cross-cutting with health and education -partnership approach to joined up working -Effective use of LSCB</p> <p>Total Quality Management Framework -Quality assurance group (AI) -Framework measures -Therapy team performance framework</p> <p>IRO Relocation -Needs analysis -Identify opportunities -Project for relocation</p>	<p>Building Better Partnerships -YOS -EIP -Behaviour Strategy</p> <p>Prevention Panel -Needs analysis -Design -Implementation</p> <p>Workforce Training and Development -Training needs analysis -Core training -Specialist training -Project/reporting methodology</p> <p>Review Support -Distance travelled tool -Set-down/closure</p> <p>Pathways to Provision Document -Implementation -Communication -Launch</p> <p>IAA / EDT Regional and National Strategy -Design (completion) -Implementation -Communication</p> <p>Family Support – Statutory Services -IFSS -Option 2 Family engagement team -Parenting assessment team -DV Hub Implementation (CR) -Over + Under 11 Implementation (Statutory lead)(CR)</p>	<p>Emotional and Wellbeing Policy -performance framework introduced</p> <p>Panel Reform -Overall forum review -Commissioning Review panel drop outs -Improve/transform -Agree performance measures for all panels</p> <p>Placement Planning Project -Systems and procedures to support stay at home -In place for LAC -Needs met with robust arrangements -Early FAFFT intervention -PRPF -Carer and child profiles -Placement plan -Matching policy -Standards for introductions</p> <p>Ty Nant Relocation -Core standards -Quick movement</p> <p>SGO Review -Review policy, procedures, support -Finance and outcomes measure</p> <p>Commissioning and Placement Strategy -Placement support strategy review -Placement stability process -MAPS -Respite review -csw guide to fostering</p> <p>16+ Service -New partnerships in place -Aims and objectives -Performance framework -IAA and Intale -YPA Service -Operational model</p> <p>Recruitment -Foster carers to meet LAC need -Placement strategy -Clarity on roles -WIR Panel</p>	<p>Children with Additional Needs</p> <p>Mental Health / Emotional Support -Psychological support -CR implementation -Behavioural support -ALN wrap around provision</p> <p>Engagement -Where does it sit? -Panels/info/Advice for staff and parents -Parent carer</p> <p>Child Disability Strategy Group -Board re-form -ALN CR Interdependencies -Transition to – CAMHS, Adult Services, Direct Payments, DOLS and Short Breaks -Continuing healthcare for children -Young carers and carers</p> <p>Placement Plan Reform -Process alignment -Placement meetings -Streamlining -LAC process guide -Safeguarding process</p> <p>Workforce Planning -Retention -Talent Management -Succession Planning</p> <p>Partnership Pathways -Health -Nursery -In-House Therapy -Partnerships with panels</p> <p>SCP Redesign -Team re-alignment -Process + practice changes -Practice standards</p>	<p>Commissioning</p> <p>Business as Usual -CR Implementation -Monitoring / Maintenance -Procurement -Outcomes -Quality -Contractual responsibilities -Funding <i>Consultation (residential care)</i></p> <p>Projects -Block Purchase of Beds in Residential Care -Short Breaks / ALN provision -Regional advocacy service -Independent visitor service -Placement Strategy -Market position statement for LAC placements -Participation in future commissioning</p> <p>Partnerships</p> <p>-Accommodation gateway 16+ -LAC at risk of offending -Apprenticeship scheme -Placements funding -Participation for future policy development</p> <p>Policy</p> <p>-Quality improvement -Maintain in put (ongoing) -Interim policies developed -Future policies as prioritised -Financial arrangements (Care leavers) -Advice and Information to practitioners</p>	<p>Outcomes for children</p> <p>Emotional & Wellbeing Strategy -Education -Poverty & Prevention -Child & Families</p> <p>Panel / Forum Review -Education (ALN/EOTAS/NEETS) -Young People Services (EOTAS/NEETS) -Child & Family (LAC/CDT/CINCS)</p> <p>Short Breaks/ALN Provision -Education (ALN) -C&F (Child Disability)</p> <p>Knowledge and Performance -Distance travelled tools which are transferable between partners -Education -Poverty and Prevention</p> <p>Communication Strategy -Internal communication -External communication -Consultation (CYP and CYP with disabilities)</p> <p>Workforce Training and Development -Review ran by Sustainable Swanseae -Total authority approach to training and development</p>
Phase						

Focus this year 2017/18

- ▶ Reduce demand at the front door/robust step down arrangements. EIP/Family Support
- ▶ Reduction in the volume of work held within the service
- ▶ Better assessments, focused intervention, better outcomes
- ▶ Safely reduce CPR/LAC
- ▶ Quality assurance/audits
- ▶ Corporate parenting strategy/Permanance



Prevention (s15)

How we Support Children and Families in Swansea

