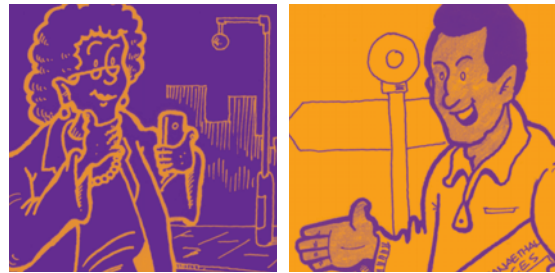


Local Councillors

What Can We Do For You?



There are 72 Councillors in Swansea who are working for you all day every day, but do you know what they do? Well read on if you want to find out...

Decision Maker

Your Councillor makes decisions about how Council services are run and may also be a decision maker for your local school, your community partnership or your community centre.

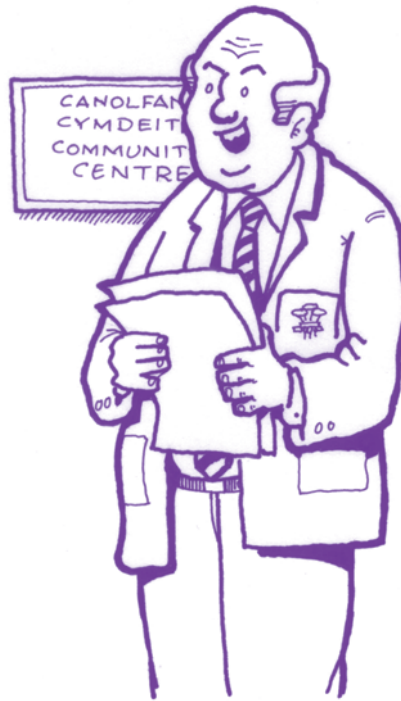
If you feel strongly about something that affects you, then you should let your Councillor know – they can make sure that your views are represented.

Community Volunteer

Your Councillor is likely to be involved in local community activities, projects and groups, giving advice, organising support and making sure that things are happening for old and young alike.



If you want to get involved in your community let your Councillor know – they can help you arrange some volunteering.



Signposter

Your Councillor will know a lot about the services offered by the Council and by other agencies. They can explain why things are done, the way they are done, and why decisions have been made.

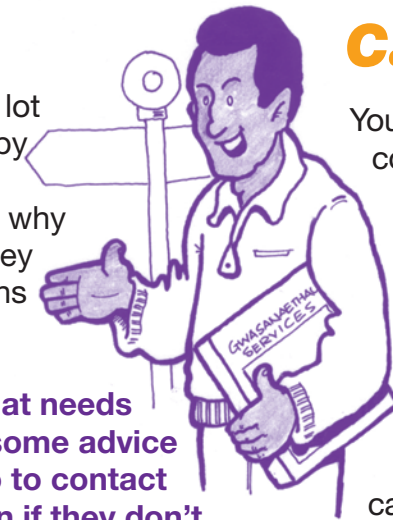
If you have something that needs sorting out or you need some advice and you are not sure who to contact ask your Councillor – even if they don't know they will probably know someone who does!

Watchdog

Your Councillor keeps an eye out to ensure that local services are provided properly and that any problems are reported and sorted whether it's faulty street lights, potholes, graffiti or abandoned cars. Councillors also have a wider scrutiny role which means that they can look at Swansea wide issues and come up with solutions.



If you spot something that needs sorting out in your community let your Councillor know – it might be part of a wider issue.



Caseworker

Your Councillor sometimes deals with complex disputes that people have with the Council or with other agencies by providing confidential advice, suggesting solutions, and, in some cases, representing people at meetings and through letters. They may also hold regular local surgeries where you can discuss your concerns.

If you have a complaint or a dispute with the Council or other agency and you don't feel confident about dealing with it yourself, let your Councillor know – they may be able to help.

Campaigner

Your Councillor may be involved in campaigning for changes in your community or Swansea wide, in charities and in voluntary groups.

If you are interested in starting a campaign then contact your Councillor – they can give you advice and maybe even some support.



Want to find out more?

Have a look at the Council website: www.swansea.gov.uk/councillors to find more and who your local Councillor is or ring 01792 636923



Cynghorwyr Lleol

Beth Gallwn Ni ei Wneud i Chi?



Mae 72 Gynghorydd yn Abertawe sy'n gweithio i chi drwy'r dydd, bob dydd, ond ydych chi'n gwybod beth maen nhw'n ei wneud? Darllenwch ymlaen os ydych chi am wybod...



CITY AND COUNTY OF SWANSEA
DINAS A SIR ABERTAWE

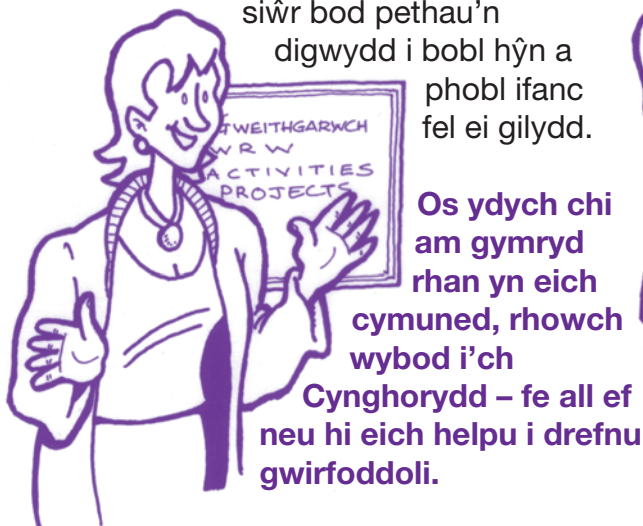
Gwneud Penderfyniad

Mae eich Cynghorydd yn gwneud penderfyniadau ynghylch sut mae gwasanaethau'r Cyngor yn cael eu rhedeg, ac fe all hefyd fod yn gwneud penderfyniadau ar gyfer eich ysgol leol, eich partneriaeth gymunedol neu eich canolfan gymunedol.

Os ydych chi'n teimlo'n gryf dros rywbeth sy'n effeithio arnoch chi, rhowch wybod i'ch Cynghorydd – fe all ef neu hi wneud yn siŵr bod eich barn yn cael ei chlywed.

Gwirfoddoli yn y Gymuned

Mae eich Cynghorydd yn debygol o fod yn rhan o weithgareddau, prosiectau a grwpiau cymunedol lleol, gan roi cyngor a threfnu cefnogaeth a gwneud yn siŵr bod pethau'n digwydd i bobl hŷn a phobl ifanc fel ei gilydd.



Os ydych chi am gymryd rhan yn eich cymuned, rhowch wybod i'ch Cynghorydd – fe all ef neu hi eich helpu i drefnu gwirfoddoli.



Cyfeirio

Bydd eich Cynghorydd yn gwybod llawer am y gwasanaethau a gynigir gan y Cyngor ac asiantaethau eraill. Gallant esbonio pam mae pethau'n cael eu gwneud fel y maent a'r rhesymau dros benderfyniadau.

Os oes gennych chi broblem y mae angen ei datrys neu os oes angen cyngor arnoch a dydych chi ddim yn siŵr pwy i gysylltu â nhw, gofynnwch i'ch Cynghorydd – hyd yn oed os nad ydynt yn gwybod, fwy na thebyg byddant yn adnabod rhywun a fydd yn gallu helpu!

Goruchwyllo

Mae eich Cynghorydd yn cadw llygad ar wasanaethau lleol i sicrhau eu bod yn cael eu darparu'n gywir a bod unrhyw broblemau'n cael eu hadrodd a'u datrys, boed hynny'n oleuadau stryd diffygiol, tyllau yn y ffyrdd, graffiti neu geir wedi'u gadael. Mae gan Gynghorwyr rôl craffu ehangach hefyd sy'n golygu y gallant ystyried materion sy'n berthnasol i Abertawe gyfan a chynnig ffyrdd o'u datrys.

Os ydych chi'n sylwi ar unrhyw beth y mae angen ei ddatrys yn eich cymuned, rhowch wybod i'ch Cynghorydd – fe allai fod yn rhan o broblem ehangach.



Gwaith Achos

Weithiau mae eich Cynghorydd yn delio ag anghydfodau cymhleth rhwng pobl a'r Cyngor neu asiantaethau eraill gan ddarparu cyngor cyfrinachol, awgrymu atebion ac, mewn rhai achosion, cynrychioli pobl mewn cyfarfodydd a thrwy lythrau. Gallant hefyd gynnal cymorthfeydd lleol rheolaidd lle y gallwch drafod eich pryderon.

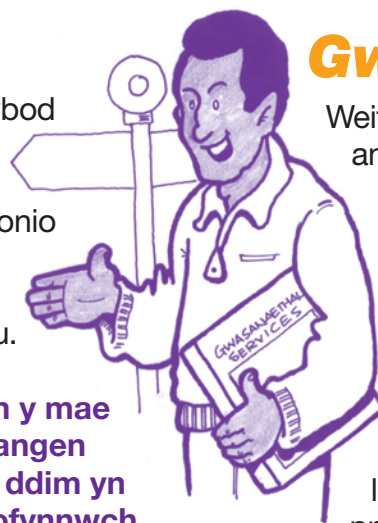
Os oes gennych gŵyn neu anghydfod gyda'r Cyngor neu asiantaeth arall a dydych chi ddim yn teimlo'n hyderus ynghylch delio ag ef eich hun, rhowch wybod i'ch Cynghorydd – fe allant helpu.

Ymgyrchu

Gall eich Cynghorydd fod yn rhan o ymgyrchu dros newidiadau yn eich cymuned neu ar draws Abertawe, mewn elusennau ac mewn grwpiau gwirfoddol.

Os oes gennych ddiddordeb mewn cychwyn ymgyrch, cysylltwch â'ch

Cynghorydd – gallant roi cyngor a hyd yn oed cefnogaeth i chi.



Ydych chi am gael mwy o wybodaeth?

Ewch i wefan y Cyngor,
www.swansea.gov.uk/councillors
i gael mwy o wybodaeth ac i wybod
pwy yw eich Cynghorydd lleol, neu
ffoniwch 01792 636923

Darluniadau gan Lescartoons

DesignPrint 01792 544220 Ref: 17581-07